



Alveley & Romsley Parish Council Newsletter

Spring 2020



All You Need to Know About the Present Covid-19 Emergency Situation and More

Closures & Cancellations

Unfortunately, due to the current difficult circumstances, the following events/facilities have been cancelled or withdrawn for the time being:

1. This newsletter is only available online (no paper copies this time!)
 2. The forthcoming Annual Alveley Parish Meeting, due to be held on Thursday April 23rd in the Pavilion is now cancelled.
 3. The Schedule of A & R Parish Council meetings are temporarily suspended until further notice.
 4. Under the new guidelines the facilities on the Rec. e.g. the play area, tennis courts etc. are closed to everyone, even though it's not always possible to physically make them all inaccessible.
- We are asking people to be aware of the restrictions and keep themselves and their families safe.

Please refer to the website/notice boards for future, further updated information.

Useful **Local** links:

Alveley Community Primary School [Website](#)

Alveley & Romsley Parish Council [Website](#)
(homepage contains more updated Covid-19 info)

Alveley Support Group (a team of volunteers ready to help those who are isolating and can't get out)
[email here](#) more information opposite:- ➡

And **Further** afield.....

Total UK COVID-19 Cases Update- [here](#)

World COVID-19 Tracker.....[here](#)

Daily Telegraph—travelling Advice- [here](#)

Scientific Advisory Group for Emergencies
(SAGE): Coronavirus (COVID-19) response....[here](#)

Gov.UK Advice....[here](#)

Help slow the spread of #COVID19 and identify at risk cases sooner by self-reporting your symptoms daily, even if you feel well.

Download the app <https://covid.joinzoe.com/>

Hello Neighbour!

If you're self - isolating, we can help

Alveley Support Group is a team of volunteers at the end of the phone ready to help with shopping orders and collections, (can't guarantee we'll get it but we'll do our best), prescriptions, anything you've run out of, dog walking, or just a chat if you need a friendly voice

Call us on 07488 311273

Email: alveleygroup@gmail.com

Alveley Support Group

As the libraries are now closed, we will also try to provide books from our own stocks if you run out of reading matter. Chapel are putting books and jigsaws out on sunny days, please observe instructions re: handling.

Londis Alveley will take orders and card payments over the phone for us to collect and deliver, 01746 780773

Quatt Farm Shop will do the same and deliver direct: Emma on 01746 780771

Royal Oak will deliver microwaveable carvery meals provided orders are for 10 or more so liaise through us, discounts for NHS workers

New Barns Nurseries will deliver on orders over £20, Tel: Douglas on 01746 710874

Mike & Sarah, butchers in Bridgnorth will deliver meat to the village on Thursdays. Tel 01746 767348 to order

If you send us your email address and we will update you with any further news

Your Parish Councillors - Contact Details ([R] = Romsley Councillor) Pam Barker 781357 Chairman, Keith Stanton 780637 Vice Chairman, Isley Jakeman 07902016425, Chris Noble 780715, Richard Narburgh [R] 781180, Samantha Potter [R] 01299 861101, Angela Preece 781171, Ben Punchard 781807, David Voysey 780356, David Rawlinson - Clerk 07972040818. Email: clerk@alveleyandromsley.org.uk address: 43, Church View Gardens, Kinver, Stourbridge. DY7 6EE Website www.alveleyandromsley.org.uk [Shropshire Council Helpdesk : 03456 789000, website: www.shropshire.gov.uk]

Your Shropshire Councillor—Contact Details Tina Woodward -780737

Parking, Traffic Management and Pedestrian Safety in Alveley

These are issues which are raised frequently by local residents with your Shropshire Councillor and Parish Councillors. We must all accept that the roads in Alveley were not designed to cope with the volume of cars and other vehicles which now come into the village, and that some houses do not have off-road parking. So, there is no magic solution to many of the problems, but they should be manageable if all concerned are sensible and considerate.

The Parish Council Chairman, Clerk and our Shropshire Councillor recently (7th February) met with members of the Safer Policing Team and the Highways Authority to inspect the current hot-spots and to identify possible improvements. The focus of our discussions was the safety of road users and pedestrians.

There is clearly a problem with cars and other vehicles parking on pavements. This is a safety issue, especially for pedestrians. Our Police colleagues have agreed to focus on this as part of their routine patrols, and to 'have a word' where necessary. They will also monitor and along Daddlebrook Road from the A442 to issue the Police obstruction, if the HGVs are parking on the footways.

The stretch of Daddlebrook Road from Cook's Cross to Bridge Road is especially problematic, given the no-parking zig – zag zone along the boundary with the School. The visibility splay at the end of Bridge Road is being used for parking, which severely hampers drivers trying to join Daddlebrook Road. Also, drivers are parking on the other side of Daddlebrook Road, particularly close to the junction at Cook's Cross at the start and end of the school day. This potentially creates a danger for other road-users and pedestrians, many of whom are children. We have therefore asked Shropshire Council (SC) Highways to consult formally on introducing double yellow lines on both sides of the Bridge Road visibility splay, and the Highways Officer suggested that this would usually include double yellow lines opposite the junction. The double yellow lines would also be extended as agreed previously with SC Highways for a short distance along Daddlebrook Road from the Cook's Cross junction, to address the concerns with cars parking close to the junction. In the meantime, the Police will provide the School with moveable signs.

We are also suggesting consultation on double yellow line along the west side of Alveley from the top of Vicarage Bank past the Three Horseshoes to the south-side of the junction with Daddlebrook Road. This could potentially assist the local bus and also HGVs requiring access to the Industrial Estate. Currently these vehicles sometimes have difficulty in getting through, especially from the Daddlebrook Road junction.

We looked at a number of other locations and we have left it to Highways to look at options, as some locations are more complex than others.

Finally, we considered residents' concerns about speeding traffic on the A442 to the south of the 40mph sign. Recently, there has been a serious accident on that stretch. It has been suggested by a number of residents that the speed limit should be extended to the south side of the junction at Fenn Green. Shropshire Highways have agreed to carry out a traffic survey during the next few months and to provide traffic accident statistics to establish whether any action is required.

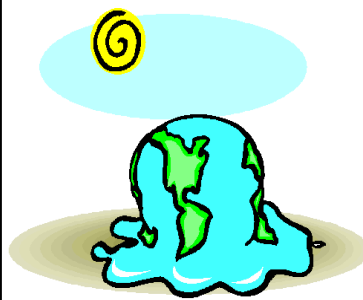


From our Shropshire Councillor, Tina Woodward

There are concerns being raised with me regarding vehicles being parked in the visibility splays in the village. I recognise parking in the village is problematic due to the number of cars and commercial vehicles which have to be accommodated on driveways and our estate roads. The splays are there for a reason and when they become compromised by parked vehicles it makes it very difficult for drivers to see oncoming traffic and pedestrians. Keeping visibility splays and road junctions clear is therefore vital.

Thank you for your assistance in this matter.

Can We Make Alveley & Romsley Zero Carbon?



The problem of climate change has been quickly forgotten in the wake of the coronavirus pandemic. However, the effects of coronavirus should be temporary, but the effects of climate change, if not reversed, will be permanent and catastrophic. The

evidence of climate change is stark, with drought and wildfires competing with flooding and other extreme weather events for national and international headlines.

The scale and global nature of the climate emergency make it daunting to consider how a rural area with just over 2,000 inhabitants can make a meaningful impact. However, the Parish Council is keen to promote sustainability and to help local residents to reduce their carbon footprint.

We hope to focus on this in the next newsletter as part of a community-wide discussion about how we want this area to develop in the future.

Or alternatively.....



Another Load of Rubbish??

Here in the Parish of Alveley and Romsley we are surrounded by beautiful countryside. We travel along roads and lanes lined with natural verges and hedgerows which are a haven for wild life, birds and wild plants. Yet some of us appear to think that nature's beauty needs enhancing with cans, bottles, take away fast food wrappers and the general rubbish to be found in vehicles. This is not just unsightly but is a danger to the wild



life living in the verges.

Consider the environment and take your rubbish home, where the council will collect it if you put it into your bins. Throwing it out of moving vehicles means the council has to collect it separately ultimately

at your expense. Littering is illegal, but it's not only illegal, it also spoils the beauty of the countryside and gives visitors to the area a bad impression, not only of the area, but of those of us who live here.

Please refrain from dumping rubbish from your vehicle thereby respecting the countryside and the wild life in it.